

# SARS-COV-2 PLpro/papain-like protease Protein

Cat. No. COV-VE1PL

## Description

<b>Source</b>	Recombinant SARS-COV-2 PLpro/papain-like protease Protein is expressed from E.coli with His tag at the N-Terminus. It contains Glu1564-Val1880.
<b>Accession</b>	YP_009725299.1
<b>Molecular Weight</b>	The protein has a predicted MW of 39.2 kDa same as Tris-Bis PAGE result.
<b>Endotoxin</b>	Less than 1EU per µg by the LAL method.
<b>Purity</b>	> 95% as determined by Tris-Bis PAGE

## Formulation and Storage

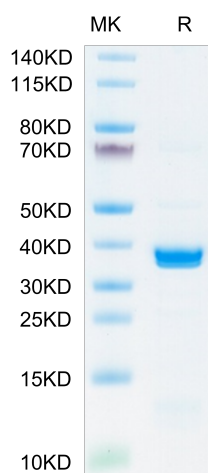
<b>Formulation</b>	Supplied as 0.22µm filtered solution in 20mM Tris, 100mM NaCl, 10% Glycerol (pH 8.5).
<b>Storage</b>	Valid for 12 months from date of receipt when stored at -80°C. Recommend to aliquot the protein into smaller quantities for optimal storage. Please minimize freeze-thaw cycles.

## Background

The coronaviral proteases, papain-like protease (PLpro) and 3C-like protease (3CLpro), are attractive antiviral drug targets because they are essential for coronaviral replication. Although the primary function of PLpro and 3CLpro are to process the viral polyprotein in a coordinated manner, PLpro has the additional function of stripping ubiquitin and ISG15 from host-cell proteins to aid coronaviruses in their evasion of the host innate immune responses.

## Assay Data

### Tris-Bis PAGE



SARS-COV-2 PLpro on Tris-Bis PAGE under reduced condition. The purity is greater than 95%.